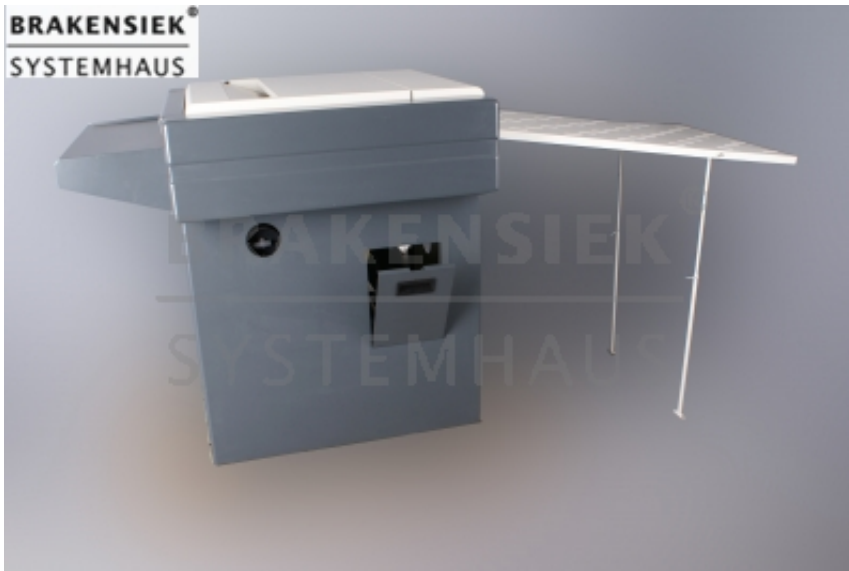


# Glunz & Jensen InterPlater 66 P plate processor Yom 2006



Glunz & Jensen InterPlater 66 P plate processor

Category: CTP - Platesetters -> Plateprocessors and Punches

Manufacturer: Glunz & Jensen

Not-New

Year 2006

Information:

The processor 66 can Interplater positive (P version) and negative (N version) one-sided offset plates in widths up to develop 660 mm.

By using the standards of the "Soft Nylon Brush" - technology that can edit Interplater 66 each available on the market records.

The machine can be built and installed in an hour.

The height and length of the output can be adjusted easily to his needs by the operator.

Key features:

High quality

- The unique feed system transports the film precisely in the developer
- No scratches possible
- Proven technology
- Possible without mixing the liquids during the development of the film

Flexible

- Works with all standard film types that are available on the market
- Develop positive and negative one-sided offset plates

Efficient

- The closed immersion reduce the consumption of chemicals due to the reduced evaporation
- Anti-evaporation lid
- Precise replenishment system which is constantly adjusted by system data

Ease of use

- Auto Replenishing System
- Easy operation by control panel
- Easy to adjust parameters

Maintenance

- Automatic self Gummierungseinheit
- Lightweight and easy to clean rack modules
- No tool for the rollers, brushes and bearings needed to remove
- Design easy to maintain

Technical data:

InterPlater 66/88

Positive and negative plate materials single-sided offset plates

Processing speed 40-140 cm / min. (16-55 "/ min.)

Material width, min 10 cm (4 ")

Material width, max 66 / 88 cm (26 "/ 34.6")

Material length, min 330 mm (13.0 ")

Material thickness 0.15 mm (0.006 ") - 0.4 mm (0.016")

Tank contents, developer 18 liters (4.75 gal U.S. gal) / 24 l (6.34 U.S.)

Tank contents, gum Recirculating from container

Adjustable temperature, developer 18-40 ° C (64.4-104 ° F) A cooling unit is recommended under certain conditions.

Adjustable temperature, dryer 30-60 ° C (86-140 ° F)

Brush speed 40-140 rpm

Filter 1 x 10 "

Water supply tap water, pressure min. 1 bar/15 psi

Water consumption in Op max. 7.0 l / min. (1.85 U.S. gal / min)

Wash Tap water

Diameter of rollers 40 mm (1.6 ")

Automatic Replenishment

Area replenishment amount 000-500 ml/m<sup>2</sup> ± 5% (0-0132 gal/m<sup>2</sup> ± 5%)

Level Control Yes

Warm up time max., Developer min 0.3 ° C /. (Min 0.86 ° F /.

Power 230 V, 1 phase, 50/60 Hz

Power consumption, max 2.2 kW

At 230 V Voltage tolerance: + 10% - 15% (208-240 V)

Start sensor operated

Weight, empty 125 / 150 kg (276/331 lb)

Approvals UL, c-UL, and GOST-R certified. Complies with CE standards.

**BRAKENSIEK®**  
**SYSTEMHAUS**



Please only contact us via our registration form and only if you are a business person yourself. Every offer is subject to prior sale and includes your acceptance to our terms & conditions [Terms and conditions \(AGB\)](#). All logos and trademarks on this site are the property of their respective owners.

You will always receive an invoice including tax, which can be paid via wire transfer, in advance or cash. If you register on paypal, you may also pay by charging your paypal account with your credit card. If you are an EU member and you have a validated tax number which can be validated here: [VIES VAT number validation / MwSt.-Informationsaustauschsystem MIAS\) Validierung der MWSt.-Nummer](#) then you pay tax-free. If you are from outside the EU, you can only pay tax-free, if the export is done with the transport company, called 'Schenker'. If you are not using 'Schenker', we cannot guarantee that we will get the export confirmation in time. In that case, you have to pay tax and you get it.



**Brakensiek Systemhaus  
GmbH & Co. KG**  
**Klönnestraße 94**  
**D-44143 Dortmund**

**[www.brakensiek.com](http://www.brakensiek.com)**

 **+49(0)231.985-00 10**

 **+49(0)231.985-2000**

**BRAKENSIEK®**  
**SYSTEMHAUS**

**Tim Brakensiek**