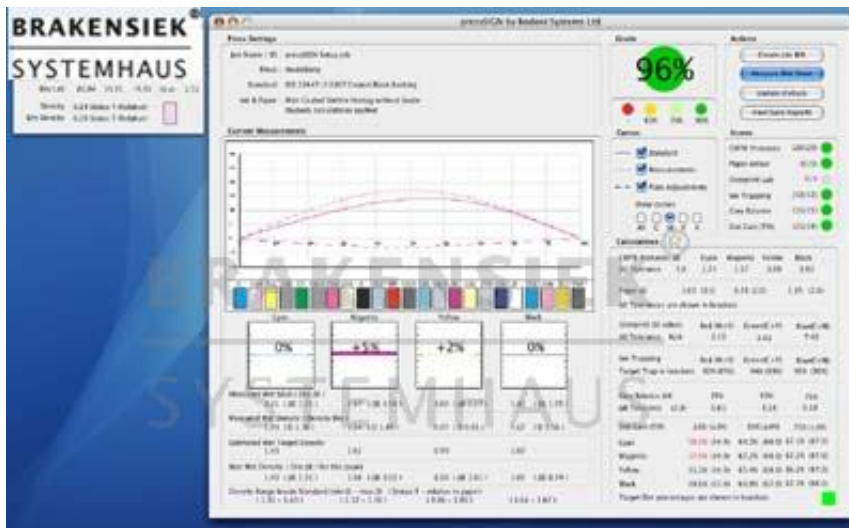


# pressSIGN v 2 - press measurement & verification software



**pressSIGN software for accurate colour. Measure and control the colour on your press.**

**pressSIGN makes it easy to run to all the international printing standards - ISO 12647-2, ISO 12647-3, GRACoL G7, SWOP.**

pressSIGN works with the GretagMacbeth Eye-One and is also available as a bundle, pressSIGN suite.

pressSIGN version 2 available now. See below for what's new in version 2

#### **More about pressSIGN**

- add the pressSIGN control strip to one of your jobs
- read the control strip with your Eye-One and adjust the densities as recommended by pressSIGN
- read the control strip when dry and update the dry back calculations
- adjust the plate curve as recommended by pressSIGN
- run the next job with the pressSIGN settings and you'll have consistently accurate colour
- test for ISO 12647-2, 12647-3, GRACoL G7 & SWOP compatibility
- easy to follow density adjustments
- easy to follow plate adjustment curves - export the data directly to the most popular RIPs
- measure wet or dry - pressSIGN compensates for the colour shift as the ink dries
- receive a detailed pdf reports and label print output
- traffic light scoring system
- use pressSIGN acts as both a densitometer and spectrophotometer
- create averaged dot gain curves from multiple readings. Allows two presses to be set up with the same plate queue
- average readings from a job to get an overall score.
- generate your own standards based on previous jobs or typing in your own values.

#### **pressSIGN meets all your measurement needs**

- CIE L\*a\*b\* values for CMYK & spot colours
- Density values for CMYK & spot colours
- Dot Gain (Tonal Value Increase - TVI) for CMYK & spot colours
- Grey Balance
- Overprint values
- Ink Trapping
- Paper Colour

#### **pressSIGN compensates for dry-back**

Use pressSIGN both to evaluate the press sheets and adjust the press as it's running. Because pressSIGN compensates for colour shift that can take place as the ink dries you can use it to adjust the press-on-the-fly. Adjust the densities as suggested by pressSIGN and you'll find that the colours will dry back to hit the ISO targets. Each control strip reading takes only a few seconds and you have a objective measure of the colour, grey balance, trapping and overprint.

#### **pressSIGN step by step guide to accurate printing**

pressSIGN takes you quickly and easily to your own or international printing standards. pressSIGN's five easy steps reduces make-ready times and improves your colour. pressSIGN's tools allow you to test during the run and to make any density adjustments knowing any colour shift during ink drying will be compensated for.

pressSIGN both reads the density and suggests the correct density adjustment, making it easy to get to the right settings quickly.

Setting the right dot gain curve can be difficult. pressSIGN provides you with the tools to set the correct dot gain curve quickly and easily. Read one sheet or multiple sheets and within seconds you'll have the plate adjustment curve to add to your plate or imagesetter. Import this data directly into the most popular RIPs.

#### **Complete set of measurements in seconds**

pressSIGN works in conjunction with the GretagMacbeth Eye-One spectrophotometer and reads the pressSIGN control strip in seconds. Read the whole control strip with one swipe or measure the patches individually. When you have read the strip you'll receive an instant report on all aspects of the press sheet. The speed with which pressSIGN operates allows you to monitor your press run constantly. You can therefore ensure the complete run conforms to the ISO, GRACol or SWOP standard.

**Choose the standard that suits your press**

Select different international printing standards according to the type of press you are running, the type of paper, the appropriate dot gain curve and your customers needs.

pressSIGN also allows you to set your own standards, based on measurements or by typing in target values for the primaries and dot gain etc. This means you can run a job to your customers needs, measure the job and create this as a standard so that you can always reproduce the job in exactly the same way.

Once the standard has been set select the default tolerances or adjust the tolerances to suit. For example you can add or remove tolerances for grey balance, overprint and trapping.

**pressSIGN turns the Eye-One into complete press measurement tool.**

Measure the Lab value, density and dot area and compare it with other readings either from the press sheet or your Pantone book, a proof or ink drawn down. Set pressSIGN to automatically check the DeltaE or Dot Area of the CMYK primaries or compare the Lab values/Dot area of secondary colours or spot colours. You can even type in a Lab value, which you might have taken from Adobe PhotoShop, and compare this with the colour on the press sheet.

**What's new in Version 2 of pressSIGN**

Just launched pressSIGN version 2. Even greater functionality makes pressSIGN ever better value for printers who want to control the colour on their press:-

New features include:-

**Automatically save all readings to a folder.**

Import previous readings from one or more jobs. This allows you to average plate curves from different presses, so reducing the number of plate queues required.

**Average the readings.**

Sort the readings according to any of the measured criteria. For example, select only the measurements that have a 100% pass for the primaries in order to only use this data to create the dot gain information to export to the RIP.

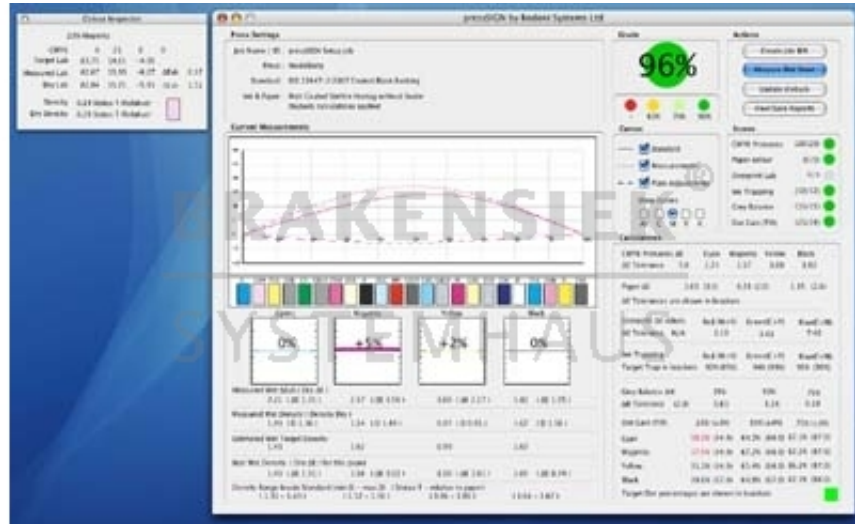
**Create a standard based on one or more readings.** This feature allows you to print a job which is outside any international standard, measure the results and make this measurement the basis for your own standard.

**Import an ICC profile.**

pressSIGN allows you to import a CMYK ICC profile and make this your target standard.

**Create your own standard by keying in the values you require.**

Input the Lab values for the primaries, dot gain and other criteria based on your specific needs.



Please only contact us via our registration form and only if you are a business person yourself. Every offer is subject to prior sale and includes your acceptance to our terms & conditions [Terms and conditions \(AGB\)](#). All logos and trademarks on this site are the property of their respective owners.

You will always receive an invoice including tax, which can be paid via wire transfer, in advance or cash. If you register on paypal, you may also pay by charging your paypal account with your credit card. If you are an EU member and you have a validated tax number which can be validated here: [VIES VAT number validation / MwSt.-Informationsaustauschsystem MIAS\) Validierung der MWSt.-Nummer](#) then you pay tax-free. If you are from outside the EU, you can only pay tax-free, if the export is done with the transport company, called 'Schenker'. If you are not using 'Schenker', we cannot guarantee that we will get the export confirmation in time. In that case, you have to pay tax and you get it.

Mitglied der

**Brakensiek Systemhaus  
GmbH & Co. KG  
Klönnestraße 94  
D-44143 Dortmund****BRAKENSIEK®**  
**SYSTEMHAUS**

Mitglied im

**[www.brakensiek.com](http://www.brakensiek.com)****Tim Brakensiek**

Mitglied des



+49(0)231.985-00 10

Premium Partner



+49(0)231.985-2000