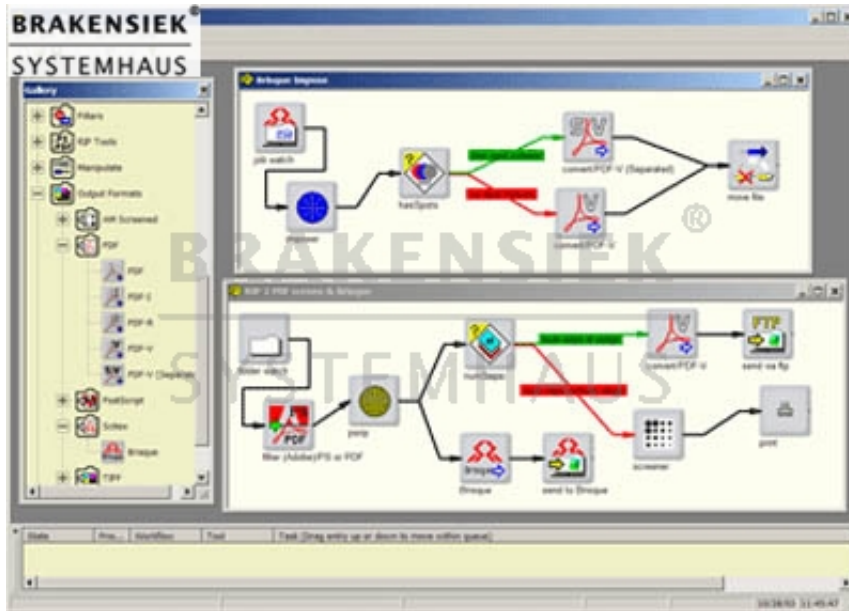


SmartMOVE



SmartMOVE

SmartMove is a Windows based addition to your Brisque workflow to give you a broad set of new features and benefits. Upgrade your Brisque to "ROSE" - Rip Once Send Everywhere!

- Rationalise your workflow?
- Automate your production processes?
- Ensure data integrity across all imaging systems?
- Hold "on approval" jobs on the system before screening to film or plate?
- View unscreened RIPPed files down to pixel level?
- Save time and money?

?2 (pronounced as psi2) consists of two optional packages for the SmartMove workflow suite of software - ?2SM and SM2?.

?2SM enables Scitex/Creo Brisque Pages and Imposed Layouts to be converted to a wide variety of industry standard open formats such as PostScript, PDF and TIFF-IT/P1.

The resultant PDF/PostScript files contain all pages and elements in the Imposed Layout including markers such as Colour Bars, Cut Marks and Slug Lines. Each element is positioned and rotated as set by the Brisque Imposition or front end Imposition package. This means that last minute changes to the layout made in the Brisque Imposition program can be catered for.

SM2? includes SmartMove's optional RIP engine and allows RIPPed pages to be sent to the Brisque in the Scitex/Creo nct/nlw formats.

?2 options are self contained. No additional software is required on the Brisque or the Macintosh/PREPS front end.

Brisque "Plus" functionality on a PC box

- * Extend the life of your Brisque system
- * Uses inexpensive standard hardware
- * Low cost entry and updates
- * Non proprietary platform and software

No additional software is required on the Brisque or the Macintosh/PREPS front end

"Vector" PDF Capability

- * Universally acceptable PDF
- * Font Free - Vector PDF output from a Brisque
- * Universally transportable to any PDF supported system or software
- * Security insured by exact conversion of Brisque raster to SM Vector PDF
- * Permanently archive Brisque jobs for reliable future purposes
- * PDF/X compliance to replace TIFF/IT for distribution
- * Full Spot Color support

- * Fully trapped PDF from your trapped Brisque job
- * Highly optimized for small size - superior to PDF2GO
- * Watermark support

"Raster" Capability

- * Low res soft proof file in either raster PDF or JPEG format
- * Send Brisque jobs to color proofing systems of your choice
- * Standard TIFF at user selectable resolution

"Brisque Impose" functionality

- * Create fully imposed signatures
 - All pages at the correct orientation and positioning
 - All marks, color bars, and sluglines
 - Complete integrity with original layout
 - Additional text of your choice in the slugline
- * Upgrade Mac PSM Rip to full Brisque Impose capability
- * 1 bit TIFF to any 3rd party CTP/CTF connectivity
 - Fast screening
 - Standard ABS screening
 - Stochastic Cristal Raster screening
 - Hybrid Screening
 - Calibration, linearization, compression and naming controls
 - JDF support

Output to any output format

Vector PDF

Screened 1 bit TIFF

Soft Proof formats

PostScript

DCS

TIFF/IT

Heidelberg Delta format

Crosfield

Fuji Final Proof

"Bi-Directional" functionality

- * Rip, Trap and Create Brisque ".job" pages from PS/PDF
- * Offline Imposition station to the Brisque
- * Upgrades Brisque workflows at lower costs with more functionality

Seamless Interface to your Brisque

- * No software installed on your Brisque

- * No warranty problems
- * Simple network hot folder interface
- * Reduces your service and support costs

SmartMove provides a true RIP Once Output Many, extensible workflow solution for today's dynamically changing environment!

SmartMove - System requirements

Hardware (Minimum):

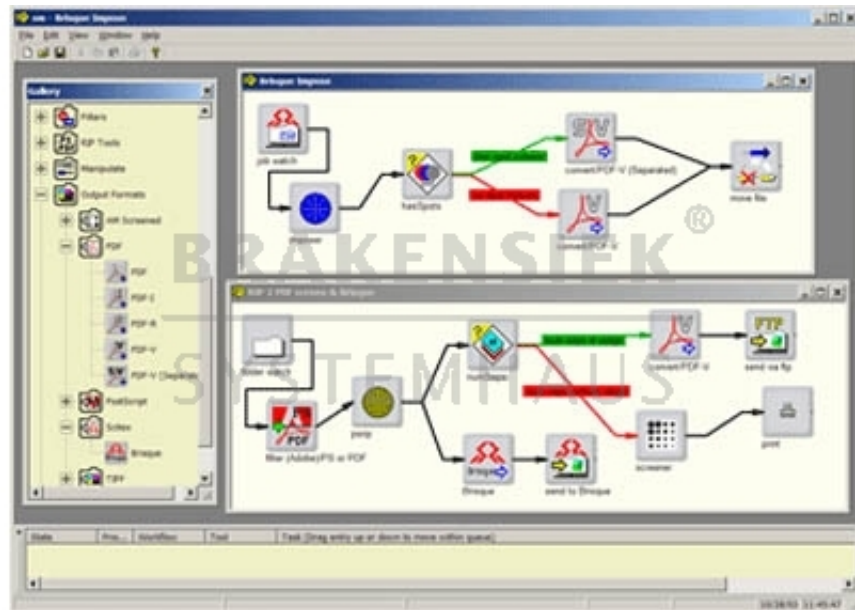
Pentium 4 2.0GHz (or equivalent), 512MB RAM, 36GB Disk, 100Mbit LAN - or above.

(Recommended): Pentium 4 3.0GHz, HT, 800FSB (or equivalent), 1GB DDR800 RAM, 72GB 10,000RPM SCSI disk, 1Gbit LAN - or above depending on other applications running on the same machine. For power users a Dual Xeon configuration would be advisable.

Software: WIN2000 Professional + MacLan or equivalent for Macintosh connectivity if required.

WIN2000/2003 Server.

XP Professional + MacLan or equivalent for Macintosh connectivity if required.



Please only contact us via our registration form and only if you are a business person yourself. Every offer is subject to prior sale and includes your acceptance to our terms & conditions [Terms and conditions \(AGB\)](#). All logos and trademarks on this site are the property of their respective owners.

You will always receive an invoice including tax, which can be paid via wire transfer, in advance or cash. If you register on paypal, you may also pay by charging your paypal account with your credit card. If you are an EU member and you have a validated tax number which can be validated here: [VIES VAT number validation / MwSt.-Informationsaustauschsystem MIAS\) Validierung der MWSt.-Nummer](#) then you pay tax-free. If you are from outside the EU, you can only pay tax-free, if the export is done with the transport company, called 'Schenker'. If you are not using 'Schenker', we cannot guarantee that we will get the export confirmation in time. In that case, you have to pay tax and you get it.

Mitglied der



**Brakensiek Systemhaus
GmbH & Co. KG**
Klönnestraße 94
D-44143 Dortmund

BRAKENSIEK®
SYSTEMHAUS

Mitglied im



www.brakensiek.com

Tim Brakensiek

Mitglied des



+49(0)231.985-00 10

Premium Partner



+49(0)231.985-2000