

# HP ProCurve Switch 4000M inkl. Mount





HP ProCurve Switch 4000 m

Non-new

#### Specifications

##### External E/A interfaces

40 RJ-45 10/100 ports (IEEE 802.3 type 10Base-T; 802.3and type 100Base-TX); 5 open module slots; 1 RS-232C DB-9-Konsolen-Port

##### Rack assembly

Installation in 19"-Standard-Rack (incl. installation parts)

##### Memory and processor

Package buffer size: 512 KB port; 10/100 ports); 4 mb port (Gigabit port); RAM and ROM capacity: 16 mb; processor type and-taktung: Intel ® i960JD with 66 MHz; Flash capacity: 2 mb

##### Latency

<10 µ see (LIFO)

##### Size of the address table

10,000 entries (difficult to decide without context)

##### Routing-and Switching capacity

3.8 GBIT/PAGES

##### Durchsatz

4.67 Mpps (64-byte packages)

##### Management functions

HP ProCurve manager (provided); manager HP ProCurve plus; command line interface; web browser; configuration menu; Out-of-Band-Management (serial, RS-232C)

##### Communication

IEEE 802.3x Flow Control; IEEE 802.1D Spanning Tree; IEEE 802.1p priority; IEEE 802.1Q VLANs; SNMPv1 / v2c; RFC 1493 bridge MIB; RMON groups: 1 (statistics), 2 (protocols), 3 (alarms) and 9 (events); Extended RMON

##### Mains connection

100 - 127 V of AC / 200 – 240 V of AC; 50/60 hertz

##### Available achievement

2.0 A max. / 1.0 A max.

##### Achievement admission

157 W

##### Operating conditions

##### Security

EN 60950 / IEC 950; UL 1950 3rd issue; cUL (CSA 950); NOM-019-SCFI-1994

##### Electromagnetic issues

FCC Class A; EN 55022 / class CISPR22 A; class VCCI A

##### Operating temperature

0 ° to 55 ° C



Camp temperature

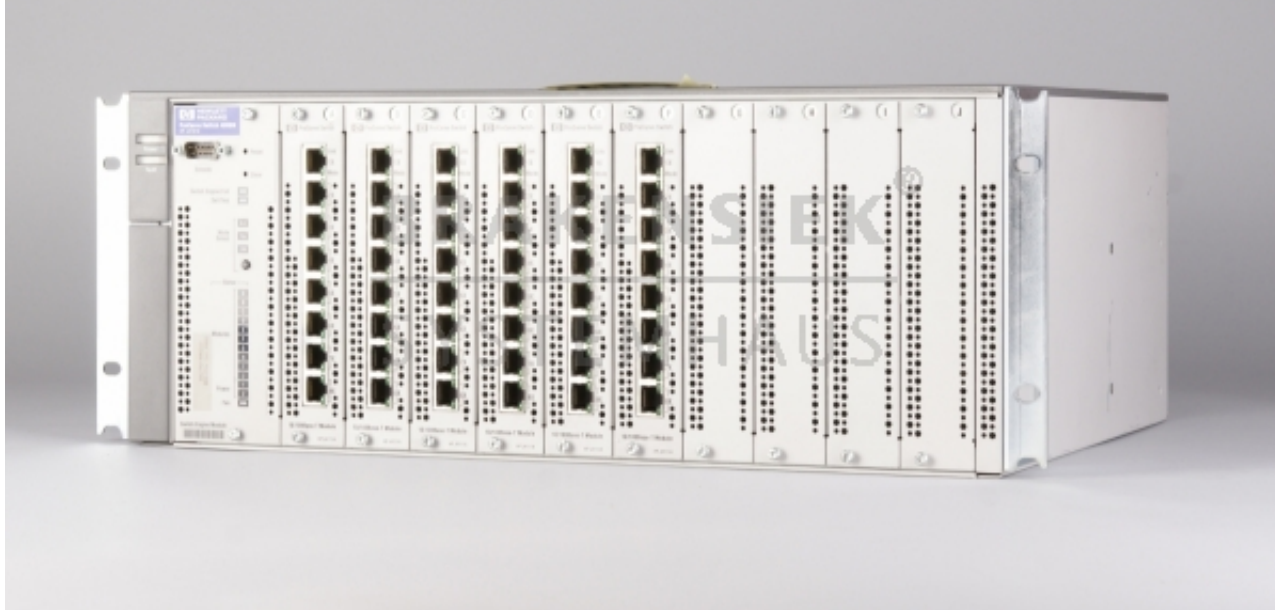
-40 ° to 70 ° C

Air humidity at company

15% to 95% with 40 ° C, not condensing



**BRAKENSIEK®**  
SYSTEMHAUS









Please only contact us via our registration form and only if you are a business person yourself. Every offer is subject to prior sale and includes your acceptance to our terms & conditions [Terms and conditions \(AGB\)](#). All logos and trademarks on this site are the property of their respective owners.

You will always receive an invoice including tax, which can be paid via wire transfer, in advance or cash. If you register on paypal, you may also pay by charging your paypal account with your credit card. If you are an EU member and you have a validated tax number which can be validated here: [VIES VAT number validation / MwSt.-Informationsaustauschsystem MIAS\) Validierung der MWSt.-Nummer](#) then you pay tax-free. If you are from outside the EU, you can only pay tax-free, if the export is done with the transport company, called 'Schenker'. If you are not using 'Schenker', we cannot guarantee that we will get the export confirmation in time. In that case, you have to pay tax and you get it.



**Brakensiek Systemhaus  
GmbH & Co. KG**  
**Klönnestraße 94**  
**D-44143 Dortmund**

**BRAKENSIEK®**  
**SYSTEMHAUS**



**[www.brakensiek.com](http://www.brakensiek.com)**

**Tim Brakensiek**



 **+49(0)231.985-00 10**



 **+49(0)231.985-2000**